

Lot – 14 (Part VI)

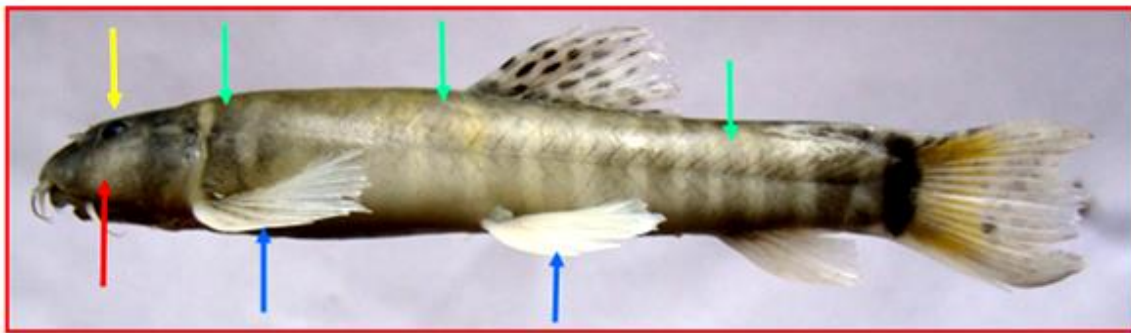
(... In continuation of Lot – 14 Part V)



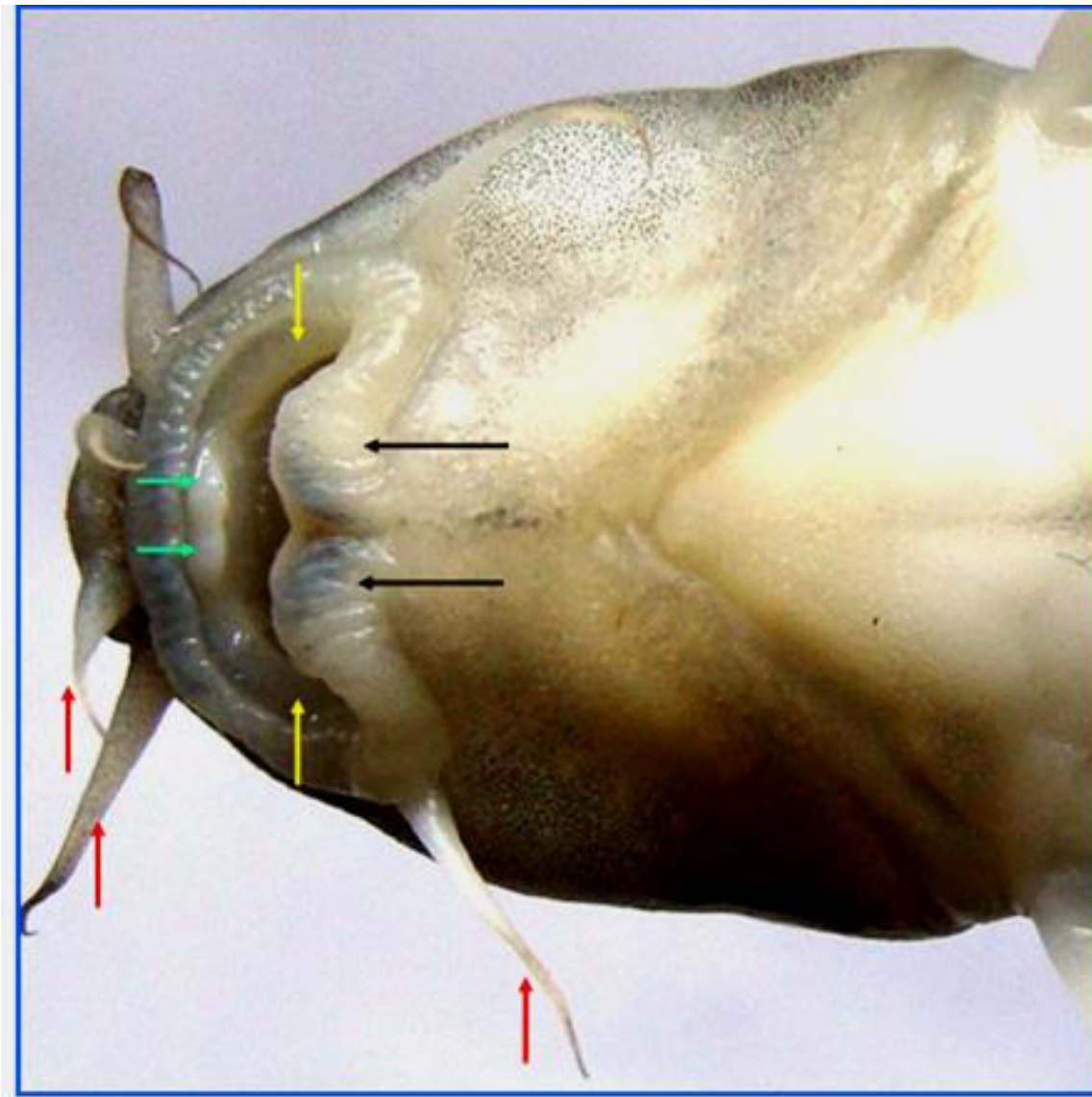
Body with 14 - 15 black vertical bands (wider than the lighter interspaces). Pectorals and ventral fins rounded and more expanded with outer 3 – 4 rays thickened; often with an axillary scale. Dorsal fin speckled. Caudal fin emarginated and with 'V' – shaped diffused bands.

..... *Schistura rupicola*

[CLICK HERE TO VIEW PHOTOGRAPHS OF](#)
[*Schistura rupicola*](#)



Schistura rupicola: Lateral view; showing rounded snout with mid-laterally swollen cheeks (red arrow); bulging and more dorsally placed eyes (yellow arrow); 14 - 15 black vertical bands (wider than the lighter interspaces); rounded and more expanded pectoral and ventral fins (blue arrows) with outer 3 – 4 rays thickened; speckled dorsal fin and emarginated caudal fin with 'V' – shaped diffused bands.



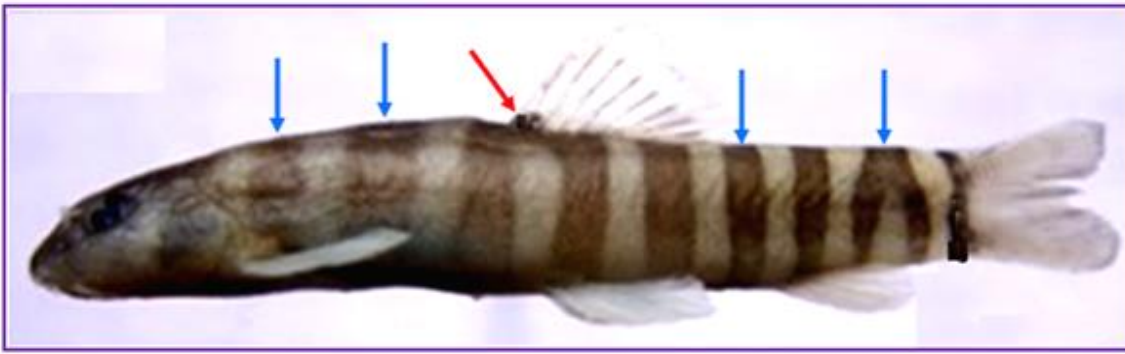
Schistura rupicula: Ventral view head region; showing 3 pairs barbels, 2 pairs rostrals and 1 pair maxillary (red arrows); rostral one being shorter, broad-based and thicker; wide mouth; hypertrophied lips, the lower lip being with 2 vertically striated ventro-lateral prominences (black arrows) separated by a shallow groove, inner side of upper lip with 2 dorso-lateral depressions (yellow arrows) for lodging the ventro-lateral halves of the lower lip and inner mid-central point of the upper lip with 2 tuberculated prominences (green arrows), fitting into the grooved mid-ventral part of the lower lip.



Body with 9 - 10 black vertical bands (almost equal to or wider than the lighter interspaces). Dorsal fin with 1 (or 2) black spots at the anterior base and the more than $\frac{3}{4}$ th of fin rays tinged black. Caudal fin forked.

..... *Schistura savona*

VIEW PHOTOGRAPH OF
Schistura savona



***Schistura savona*: Lateral view; showing 9 - 10 black vertical bands (almost equal to or wider than the lighter interspaces) [blue arrows]; 1 (or 2) black spots at the anterior base of dorsal fin (red arrow) with more than 3/4th of fin rays tinged black and forked caudal fin.**

[.....Contd.](#)
[.....Read more](#)