

Lot – 14 (Part III)

(... In continuation of Lot – 14 Part II)



Body brownish on the back, silvery on sides; whitish along the belly; variegated with a thin dark band along the sides (more prominent behind operculum) with **9 - 11 rectangular dashes** (= mid-lateral black spots) with equal interspaces and **9 - 10 saddle shaped bands** along the dorsum and a **dark stripe** from tip of snout to eye. **Mental lobes** (= deeply divided, posteriorly projecting lobes at lower lip) fleshy mid-ventrally; their corrugated skinny flaps with or without digitiform (females) or coniform (males) projections continuous at the angle of mouth with broad-based mandibular barbels. **Eyes** larger and bulging. The **osseous crest (=lamina circularis)** on the fused 7th and 8th pectoral fin rays in **males** is shovel-like and gradually elevating posterior wards from behind the origin of pectoral fin rays. **Caudal fin** notched or deeply emarginate; with wider **4 -5 Σ - shaped bands** and equal – sized interspaces; also with a prominent/**diffused black spot** at its mid-upper base.

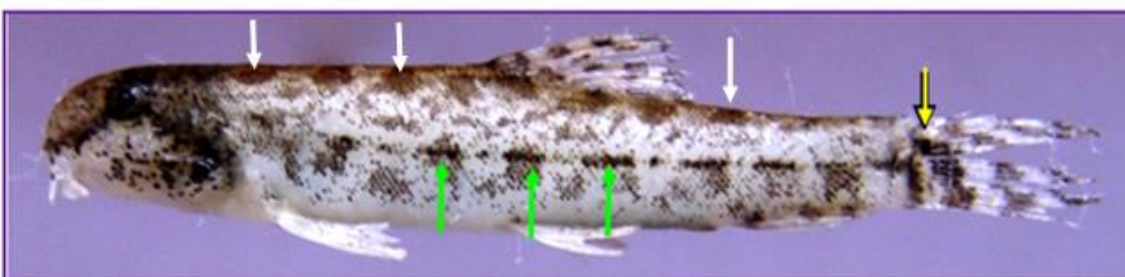
[In some individuals **caudal fin is with faded Σ - shaped bands** and there is also another dark spot on the posterior edge of the medial rays (5–10) of the caudal fin].

..... *Lepidocephalichthys annandalei*.

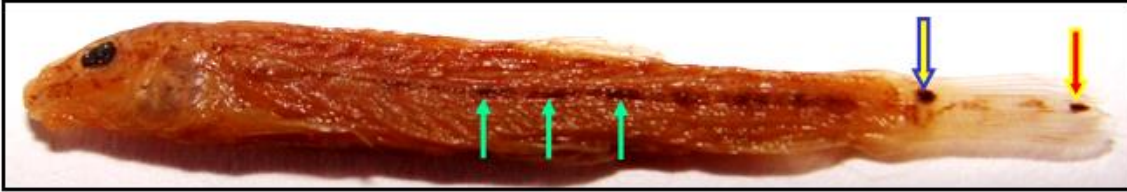
PHOTOGRAPHS OF *Lepidocephalichthys annandalei*



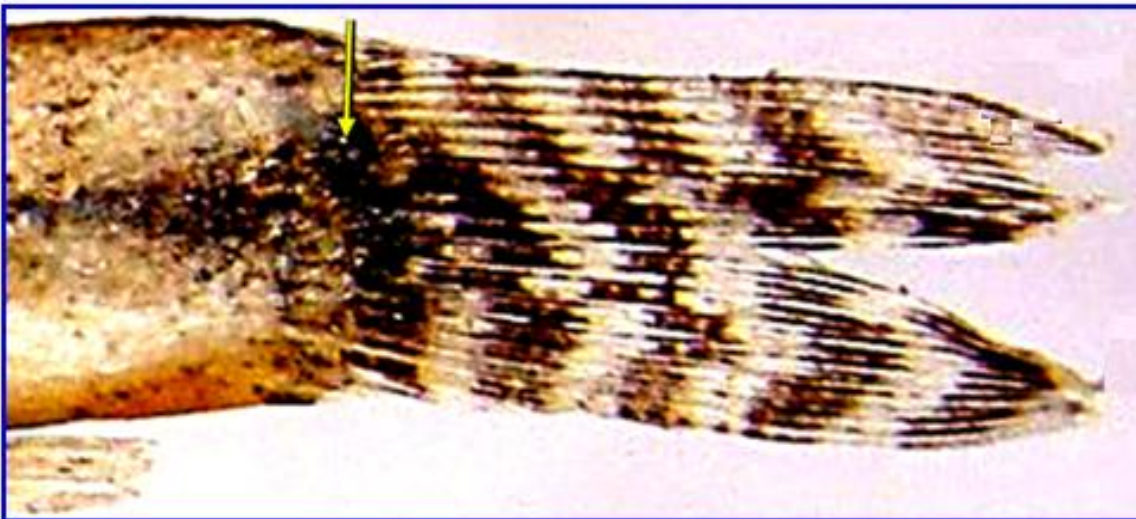
Lepidocephalichthys annandalei (Male): Lateral view; showing brownish body on the back, silvery on sides; whitish along the belly; variegated with a thin dark band along the sides; **9 - 11 rectangular dashes** (= mid-lateral black spots) with equal interspaces; **9 - 10 saddle shaped bands** along the dorsum and a **dark stripe** from tip of snout to eye; bulging eyes; notched or deeply emarginate caudal fin with wider **4 -5 Σ - shaped bands** and equal – sized interspaces; also with a prominent/**diffused black spot** at its mid-upper base (yellow arrow).



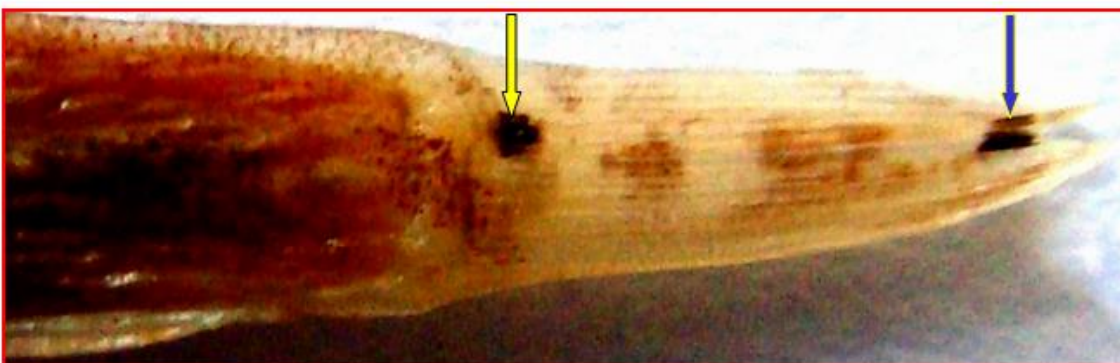
Lepidocephalichthys annandalei (Female): Lateral view showing brownish body on the back, silvery on sides; whitish along the belly; variegated with a thin dark band along the sides; 9 - 11 rectangular dashes (= mid-lateral black spots) with equal interspaces (green arrows); 9 - 10 saddle shaped bands along the dorsum (white arrows) and a dark stripe from tip of snout to eye; bulging eyes; notched or deeply emarginate caudal fin with wider 4 -5 Σ - shaped bands and equal - sized interspaces; also with a prominent/diffused black spot at its mid-upper base (yellow arrow).



Lepidocephalichthys annandalei: A preserved specimen in lateral view; showing two diagnostics viz., 9 - 11 rectangular dashes (= mid-lateral black spots) with equal interspaces (green arrows); notched or deeply emarginate caudal fin with faded Σ - shaped bands; a prominent/diffused black spot at its mid-upper base (yellow arrow) and also another one on the posterior edge of the medial rays (5-10) of the caudal fin (red arrow).



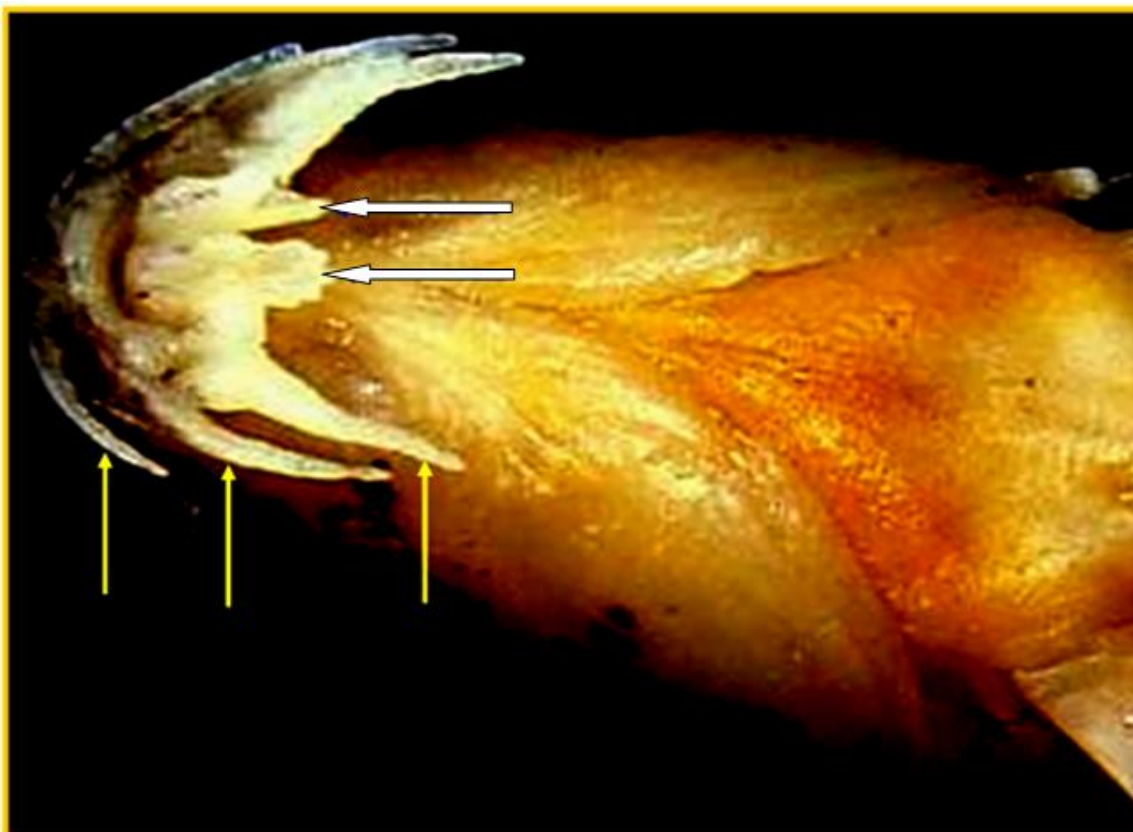
Lepidocephalichthys annandalei: Caudal region enlarged; showing notched or deeply emarginate caudal fin with wider 4 -5 Σ - shaped bands and equal - sized interspaces; also with a prominent/diffused black spot at its mid-upper base (yellow arrow).



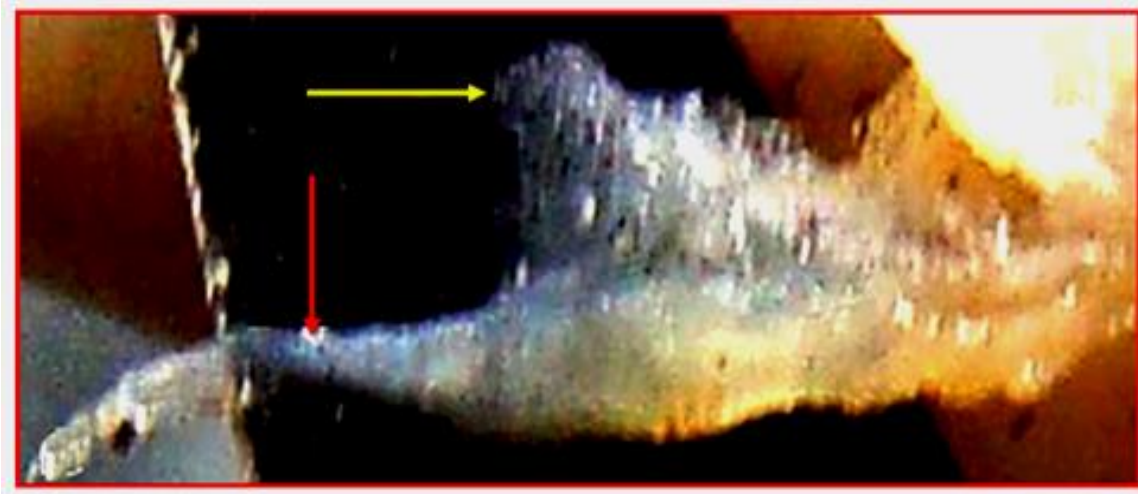
Lepidocephalichthys annandalei: Caudal region enlarged (some smaller individuals); showing notched or deeply emarginate caudal fin with faded Σ - shaped bands; a prominent/diffused black spot at its mid-upper base (yellow arrow) and also another one on the posterior edge of the medial rays (5–10) of the caudal fin (blue arrow).



Lepidocephalichthys annandalei (Male): Ventral view of head; showing 3 pairs of barbels and mid-ventrally fleshy mental lobes (= deeply divided, posteriorly projecting lobes at lower lip); their corrugated skinny flaps with coniform projections (red arrow) continuous at the angle of mouth with broad-based mandibular barbels (white arrow).



Lepidocephalichthys annandalei (Female): Ventral view of head; showing 3 pairs of barbels (yellow arrows) and mid-ventrally fleshy mental lobes (= deeply divided, posteriorly projecting lobes at lower lip); their corrugated skinny flaps with digitiform projections (white arrows) continuous at the angle of mouth with broad-based mandibular barbels.



Lepidocephalichthys annandalei (Male): Ventral inner view, Pectoral Fin region, showing the presence of a shovel-like vertical osseous crest (=lamina circularis) [yellow arrow] on the fused 7th and 8th pectoral fin rays (red arrow).



Lepidocephalichthys annandalei (Female): Ventral inner view, Pectoral Fin region, showing fused 7th and 8th pectoral fin rays [without a wedge-shaped extension].

.....Contd.
.....Read more