

## Lot – 14 (Part V)

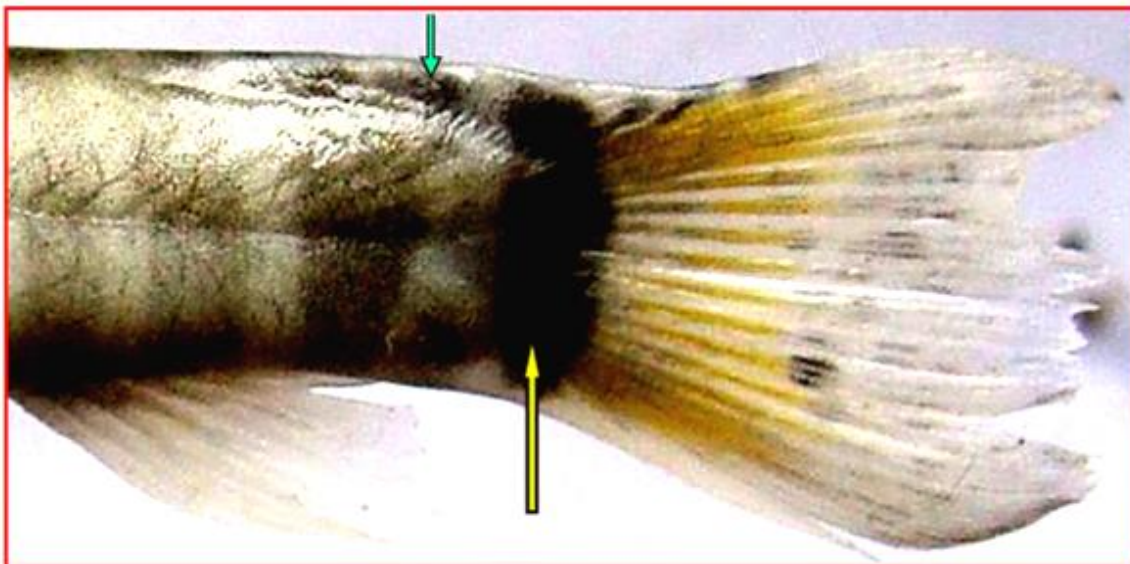
( ... In continuation of Lot – 14 Part IV )



The samples from **Lot – 14**, segregated as belonging to **Genus – *Schistura*** are characterized as under:

**Body** brownish/drab yellowish, with **9 – 15 vertical bars** descending down from the dorsum up to belly, separated by light coloured interspaces; **a black spot at the base of anterior dorsal fin rays** and a **black vertical bar / band** at the base of caudal fin. **Caudal base** with a dorsal **keeled adipose elevation**. **Snout** rounded with mid-laterally swollen cheeks. **Barbels** 3 pairs; 2 pairs rostrals and 1 pair maxillary; rostral one being shorter, broad-based and thicker, the 2<sup>nd</sup> pair being without any membranous flap. **Eyes** bulging and more dorsally placed. **Mouth** wide. **Lips** hypertrophied; the lower lip being with 2 vertically striated **ventro-lateral prominences** separated by a shallow groove; inner side of **upper lip** with 2 dorso-lateral depressions for lodging the ventro-lateral halves of the lower lip and inner mid-central point of the upper lip with 2 tuberculated prominences, fitting into the grooved mid-ventral part of the lower lip. **Caudal fin** emarginated to furcate.

..... *Schistura*



*Schistura* sp.: Caudal region enlarged; showing a black vertical bar / band at the base of caudal fin (yellow arrow) and the caudal base with a dorsal keeled adipose elevation (green arrow).

The samples found belonging to Genus – *Schistura* are represented by 3 species in the streams of Eastern and Western Doon Valley, characterized as under:



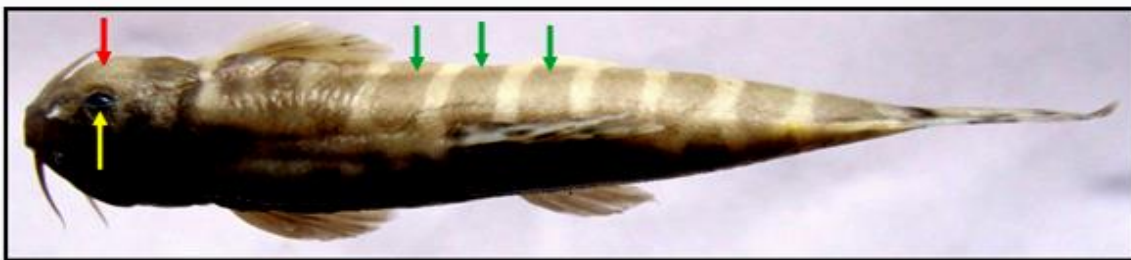
**Body** with up to **11-12 black vertical bands** (appearing as encircling the body), broader than interspaces; often the bands anterior to dorsal fin break-up into narrow bands. A posteriorly directed suborbital spine present in males. **Dorsal fin** speckled. **Caudal fin** deeply emarginated and with 'Σ' – shaped diffused bands.

..... *Schistura montana* [= *Paraschistura montana*]

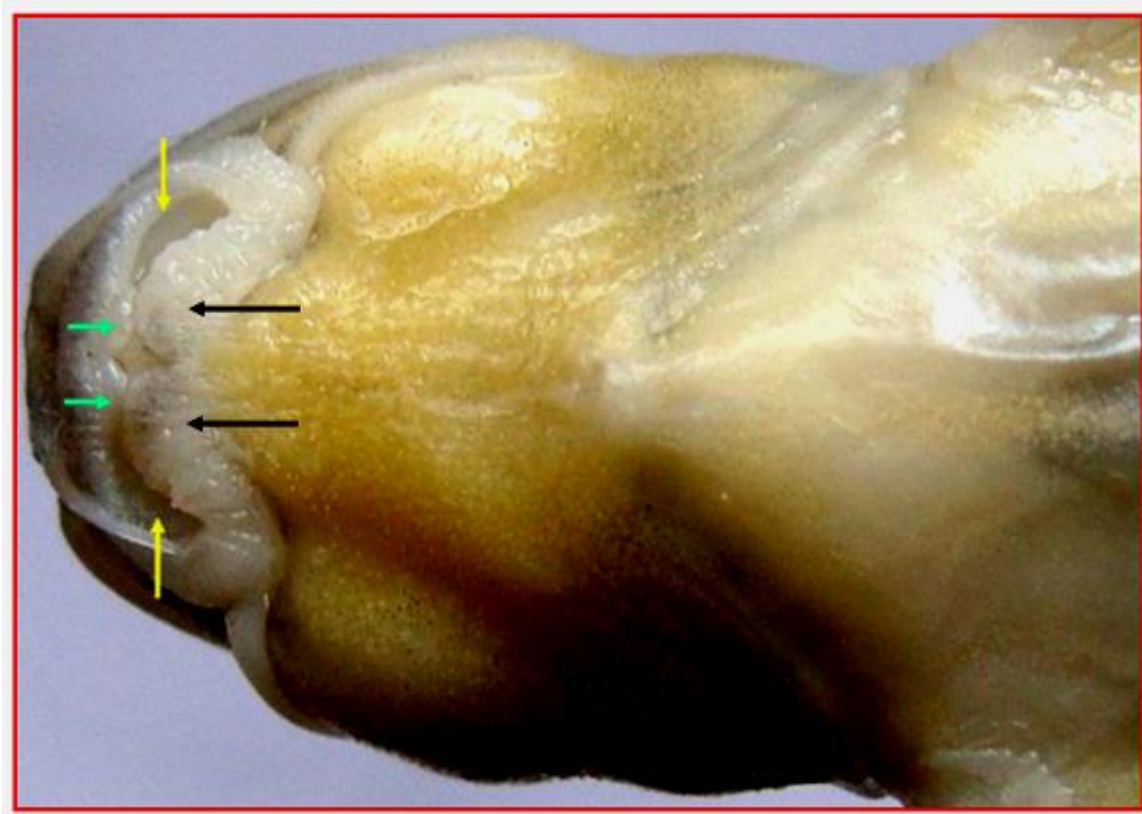
[CLICK HERE TO VIEW PHOTOGRAPHS OF](#)  
[\*Schistura montana\*](#)



*Schistura montana*: Lateral view; showing rounded snout with mid-laterally swollen cheeks (red arrow); bulging and more dorsally placed eyes; up to 11 - 12 black vertical bands (appearing as encircling the body), broader than interspaces (yellow arrows) and deeply emarginate caudal fin and with 'Σ' – shaped diffused bands.



*Schistura montana*: Dorsal view; showing rounded snout with mid-laterally swollen cheeks (red arrow); bulging and more dorsally placed eyes (yellow arrow) and up to 11 - 12 black vertical bands (appearing as encircling the body), broader than interspaces (green arrows).



***Schistura montana*: Ventral view head region; showing wide mouth; hypertrophied lips, the lower lip being with 2 vertically striated ventro-lateral prominences (black arrows) separated by a shallow groove, inner side of upper lip with 2 dorso-lateral depressions (yellow arrows) for lodging the ventro-lateral halves of the lower lip and inner mid-central point of the upper lip with 2 tuberculated prominences (green arrows), fitting into the grooved mid-ventral part of the lower lip.**

[.....Contd.](#)  
[.....Read more](#)